

Novell eXtend

Simplify the Development
and Deployment of Advanced
Business Applications

www.novell.com/eXtend

PRODUCT BROCHURE

Novell is pleased to welcome SilverStream's leading Web application development platform, now known as Novell eXtend, into the Novell family of solutions. The combination of the two companies provides organizations with the three elements they will need to successfully deploy Web applications – business expertise with consulting services, Web Services application development capabilities, and reliable, secure, scalable networking infrastructure.

Importantly for customers, Novell is alone among the major players pursuing a platform agnostic approach by providing solutions that are standards-based and interoperable with all market leading platforms. This provides a compelling differentiator in Novell's favor as companies look for cost effective ways to leverage the power of Web Services using their existing infrastructures.

Novell.

Novell eXtend

Experience the Power of a Visual Integrated Services Environment

Today there is tremendous pressure to quickly solve complex business challenges, and you need to build a new breed of applications to get it done. These are not static Web pages, but interactive applications that integrate existing systems and optimize complex business processes and workflows. Yet you're faced with the same old constraints:

TIME

In today's world, you can't wait for software to prove its value somewhere down the line. You need solutions that can be quickly implemented by your existing staff, with the speed and power to meet the business challenges you're facing right now, as well as future needs.

BUDGET

Now more than ever, any technology you consider must have a track record of proven performance within defined budget parameters.

SKILLS

Why do so many technology investments demand programmers with specialized skills? A well-designed solution should be easily implemented and managed by the talent you already have in house.

INFRASTRUCTURE

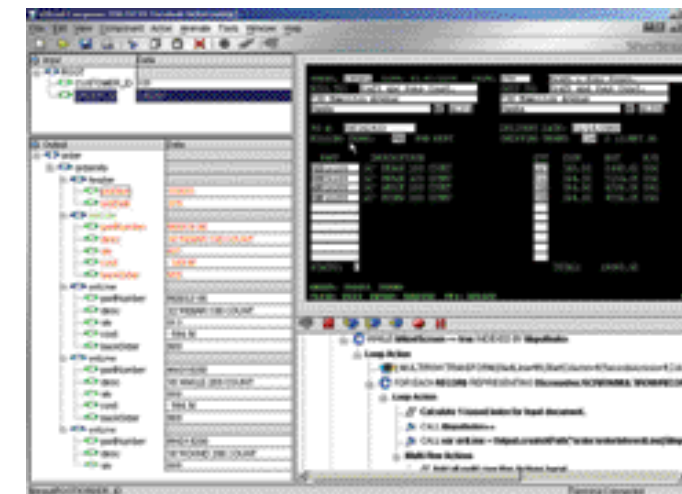
The new breed of applications need to access business-critical data and functions stored in your existing systems, so you can deliver information to the people and systems that need it, when and where they need it.

STANDARDS

Obsolescence is unacceptable. Your IT investments need to serve you beyond the point of meeting today's business challenges. You need standards-based solutions that will plug and play with the technologies you've already invested in, as well as those you'll acquire in the future.



Novell eXtend is the Visual Integrated Services Environment for rapidly creating, deploying and managing advanced business applications. Building applications visually keeps your developers productive by reducing the time spent writing code, accelerating development and lowering your costs by eliminating the need for highly specialized programmers.



Novell eXtend enables drag-and-drop visual integration to legacy applications, data and transactions. This screen shows eXtend Composer designer connected to a Telnet session

"Integration is the main thing that attracted us. The time-to-market profile of eXtend Composer-based Web Services is simply outstanding. We built a solid Web Services foundation, tied our extranet to our operational systems and positioned Imperial for future opportunities in four months."

*George Muller
CIO
Imperial Sugar*

Novell.

"Our customers love it. We don't get anything but positive feedback. They're able to check eligibility, process the notification, and receive an authorization number, all in less than two minutes. Prior to that, it was having to review 20 pages of batch reports and hand-written forms; they can't even quantify the time that they've saved."

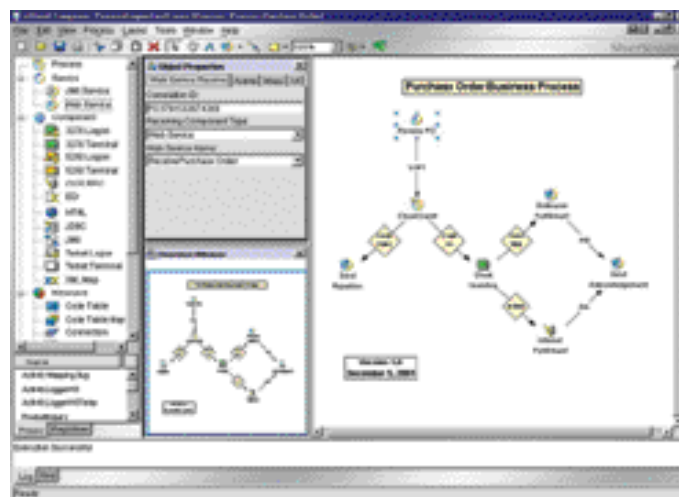
*Marilyn Daly
Neighborhood Health Plan*

The Ease of Drag-and-Drop Integration

Novell eXtend Composer is the integration solution that allows your existing staff to painlessly and flexibly integrate systems using an intuitive drag-and-drop interface. eXtend Composer features a single visual design environment that connects to and extracts data from a broad range of systems: mainframes, midrange and client server systems, databases, EDI transactions, ERP packages and even other Web applications.

Data locked in any existing system is mapped and transformed into XML without disruption to that system. eXtend Composer can then wrap these data as Web Services and deploy them to any J2EE server, including IBM WebSphere, BEA WebLogic and Novell. eXtend Composer supports key standards including all XML vocabularies, J2EE, HTTP, SSL and X.509 digital certificates.

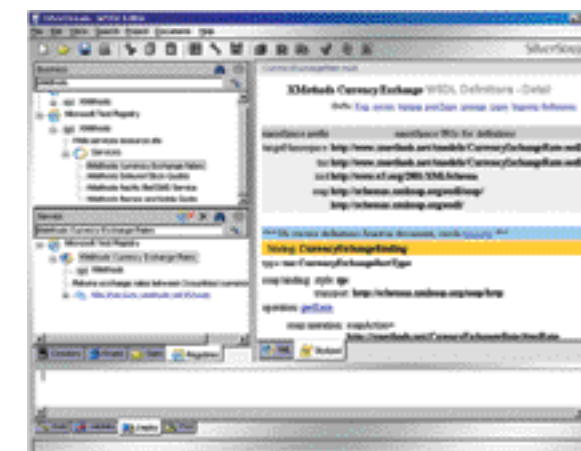
Novell eXtend provides a visual workflow designer with drag-&-drop interface to design human interactive workflows



An Intuitive Interaction and Portal Server

Novell eXtend Director is the interaction and portal server that gives you the power to rapidly build interactive applications for different users on different devices. Using your existing team, you can quickly create portal and advanced Web-based applications that consolidate information from different sources and deliver relevant views to users. eXtend Director's user-friendly visual designers allow you to quickly automate human-based workflows, using dynamic rules to support changing business requirements without custom coding.

eXtend Director enables users to lay out their own Web pages, selecting the information relevant to them. Content can be created on a browser or with any WebDAV-compliant tool, including such common programs as Microsoft Word and Excel. eXtend Director allows you to deliver content that fits the specific needs of your users, rather than expecting your users to conform to the limitations of your technology.



eXtend Workbench provides intuitive editors for building applications driven by dynamic business rules based on natural language rule definitions

Novell.

As the evolution and adoption of a services-based architecture progresses, the companies that will best address the needs of customers are those who provide both rapid integration and interaction capabilities, and adhere to accepted industry standards. Novell eXtend is one of the best examples of this new class of product offerings."

*Tom Dwyer
Vice President and
Managing Director
the Aberdeen Group*

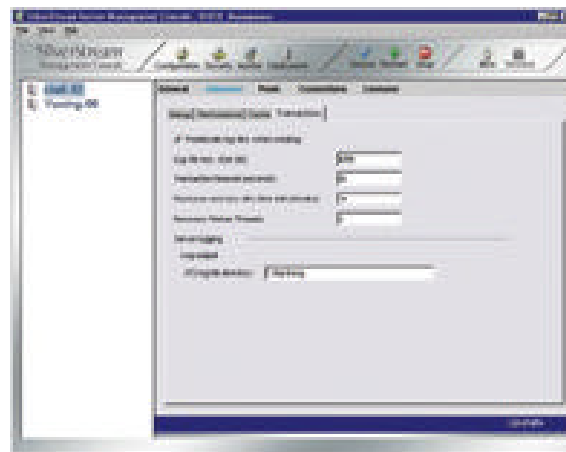
Advanced Business Applications: Web Services In Action

Novell eXtend offers proven and innovative Web Services technology to create advanced business applications that solve your immediate IT problems. And these applications and business functions can be easily repurposed to meet business challenges you didn't even know you had when you started the original project.

Novell eXtend Workbench is a powerful and productive development environment that simplifies and accelerates the creation of eXtend Director applications based on J2EE and Web Services. It increases developer productivity with wizards, automatic code completion, property inspectors, conversion tools for updating to new J2EE standards, and built-in support for source code control systems. Plus eXtend Workbench offers one-button deployment to market leading J2EE application servers.

Novell eXtend Application Server streamlines IT management with a rich administration console and centralized deployment support. The eXtend Application Server enables the creation of portable applications using the latest J2EE 1.3, SOAP 1.1 and XML standards, and deploys them in a proven, enterprise-class environment.

eXtend Application Server provides a user-friendly administration console to simplify IT management



Linking Business and Technology In Real Time

Novell eXtend brings technology closer to business, allowing you to quickly and easily create customized business applications that provide your company's people and systems with the real time information they need to excel.

The power and ease of Novell eXtend's Visual Integrated Services Environment has been proven by our customers creating customized business solutions in a wide variety of industries. And our technology leadership reaches beyond the borders of our own and our clients' companies. Novell is involved in over 30 standards bodies, assuring that our technologies will serve our clients' needs long into the future.

Novell eXtend was recently named the 2002 "Product of the Year" by eAI Journal, the leading monthly magazine and Web site focused on eBusiness, application integration and Web Services. In selecting Novell eXtend, the panel of judges - including leading industry analysts and eAI editors - cited eXtend's robust functionality and ease-of-use.



Novell eXtend Composer also received the "World Class Product" Award by Web Services Journal. WSJ found eXtend Composer's process development cycles consistently easy to follow throughout the application.

Novell.

Novell, Inc.

1800 South Novell Place
Provo, Utah 84606
1.888.321.4272 (US)
1.801.861.4272 (outside US)

Novell, Inc.

Two Federal Street
Billerica, MA 01821
1.888.823.9700 (US)
1.978.262.3000 (outside US)

Novell, Inc. EMEA

Europe, Middle East &
Africa
Novell Software B.V.B.A
Buro & Design Center
Heizel Esplande B21
1020 Brussels, Belgium
T +32.2.474.4611
F +32.2.474.4695

Novell, Inc. Asia Pacific

Novell Software Asia Ltd.
19th Floor, Kailey Tower
16 Stanley Street
Central, Hong Kong
T+852.2160.9111
F+852.2975.8343

© 2002 Novell, Inc. All rights reserved.
Novell and iChain are registered
trademarks, and eDirectory is a trade-
mark of Novell, Inc. in the
United States and other countries.

www.novell.com

Novell.